



Greenock CAD Service NV/SA
Industrielaan 27 (IZ III)
B-9320 Erembodegem
Tel : +32 53 781332
Fax : +32 53 779360
<http://www.greenock.eu>

Revit +plus pack Apps

Help document



Contents

<i>Revit +plus pack Apps</i>	1
Help document	1
1. Introduction	1
2. Features	2
2.1 Upgrade Files	2
2.2 Backup Folder	5
2.3 Export / Import XLSX	6
2.4 Crop PDF to remove excessive white borders	8
3. Contact Greenock Helpdesk.	12
4. Participate in the Greenock CAD Service community.	13

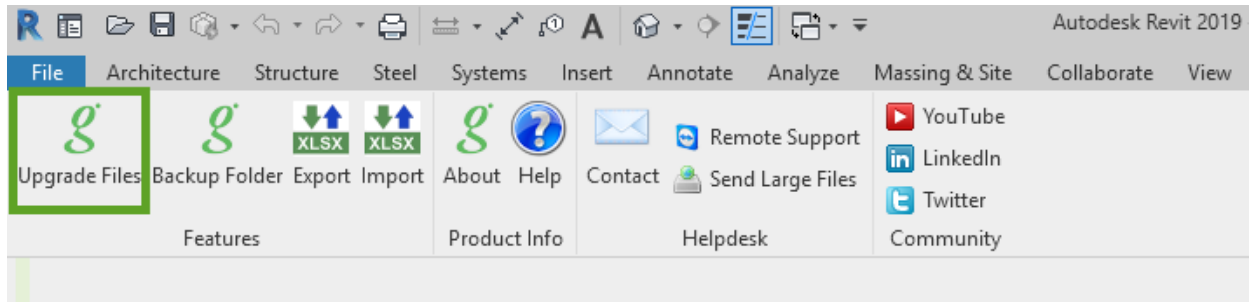
1. Introduction

Revit +plus pack apps contains extra functionalities in Revit with a focus on automating certain repetitive tasks and ease of use. These functionalities were chosen by our staff based on FAQ's from our helpdesk customers. If you have remarks or requests about this topic please don't hesitate to contact our helpdesk at helpdesk@greenock.eu.



2. Features

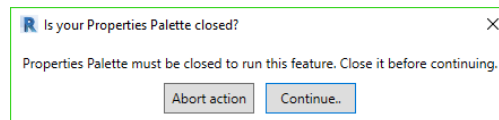
2.1 Upgrade Files



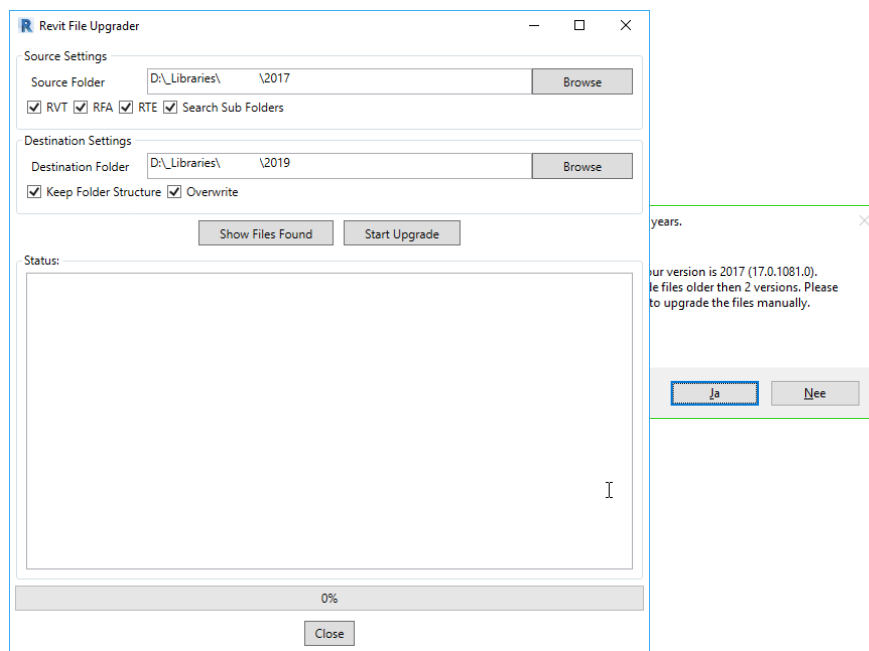
This tool is designed to let you upgrade any Revit file to the latest version installed on your system.

It will create a copy of your files.

Please close the *Properties palette* before using this tool.

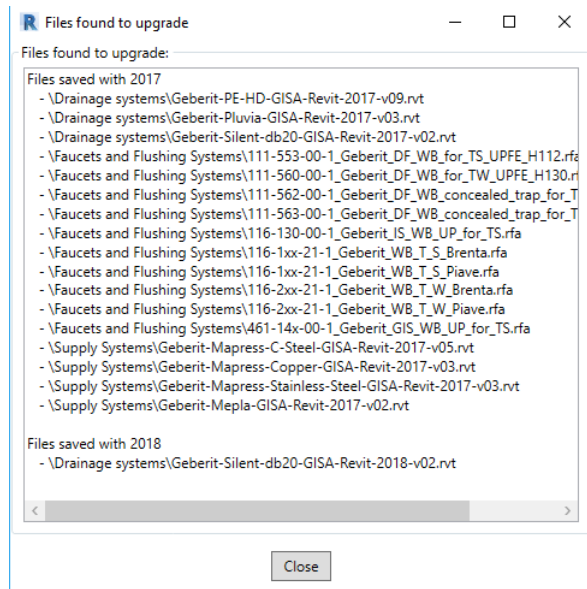


After clicking on the *Continue...* button the *Revit File Upgrader* dialogue box will appear.

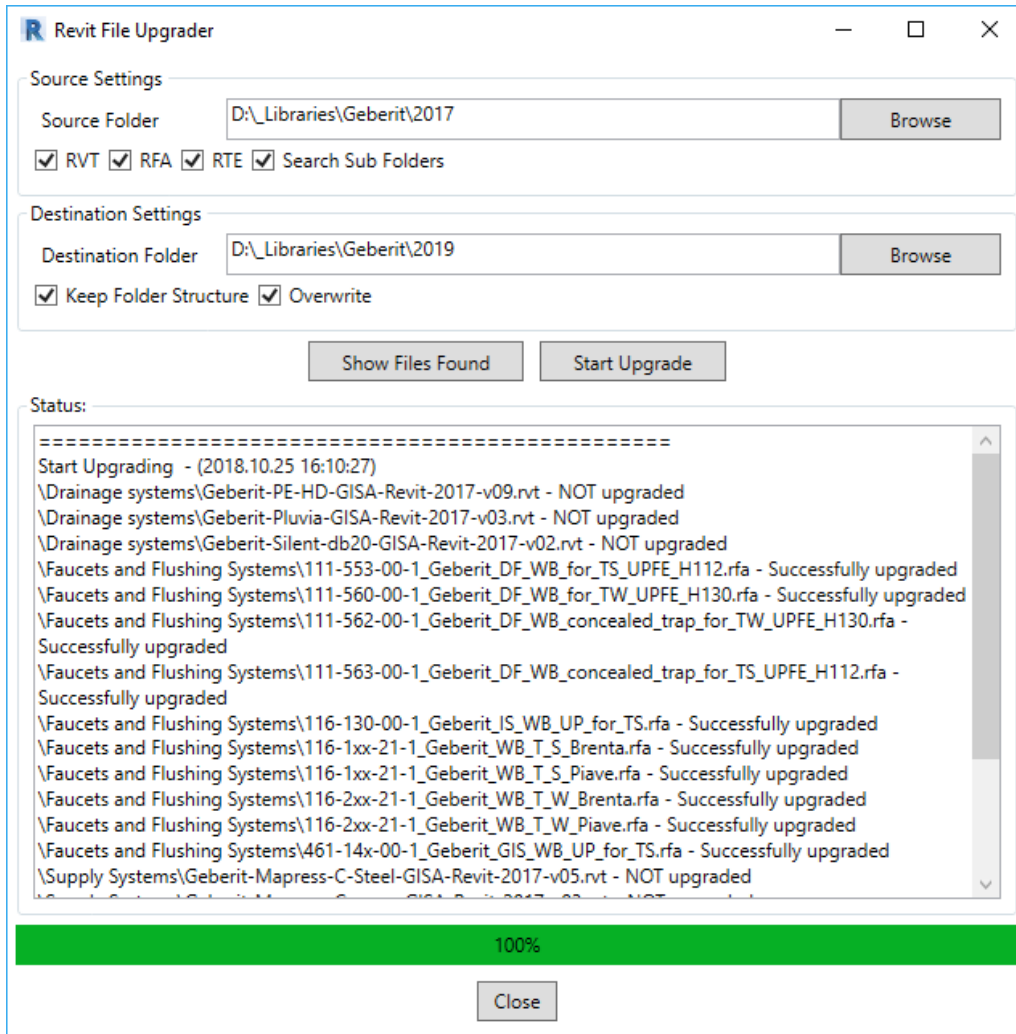


In this box, you indicate the source folder and which filetypes you wish to upgrade to a newer version.

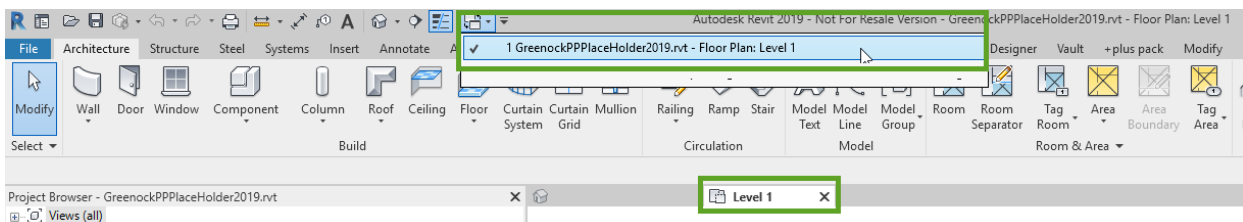
Select the destination folder into which the tool creates the upgraded copies and you also can keep your folder structure by checking *Search Sub Folders* and *Keep Folder Structure*. The *Show Files Found* button displays the files that will be upgraded and with the *Start Upgrade* button you launch the utility. After the upgrade has finished, the *Status* shows the log file and afterwards you can click the *Close* button.



If you upgrade files from a version older than 2 releases, a warning will be displayed saying that it's best practice to upgrade gradually. This can be ignored, but keep in mind that this can generate errors.



Don't forget to close the *+Plus Pack Placeholder* Revit file after the upgrade, this template file is used to upgrade the selected files.





2.2 Backup Folder

Note : This topic describes backup files for **NON-WORKSHARED PROJECTS**.

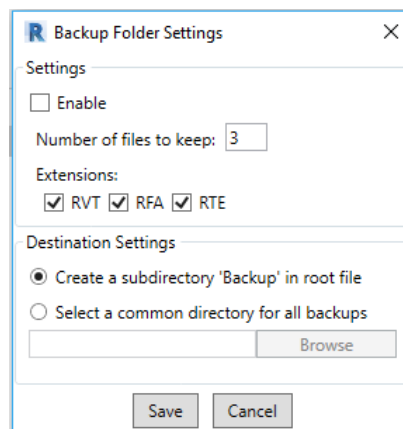
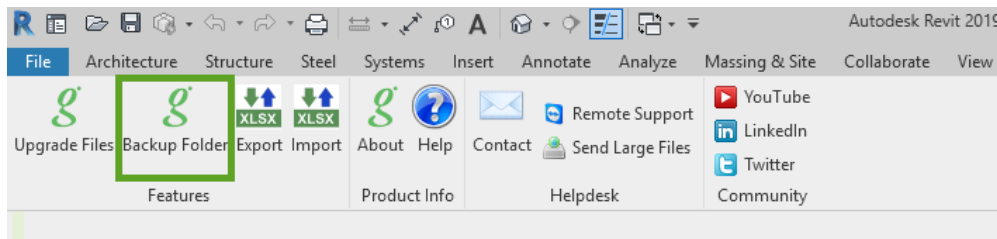
When you save a project, Revit makes automatically a backup copy of the previous version of the project (that is, the project file before the current save).

This backup copy has the name <project_name>.<nnnn>.rvt, where <nnnn> is a 4-digit number indicating how many times the file has been saved.

By default and not changeable for Revit standalone files, the backup file resides in the same folder as the project file.

You can specify the maximum number of backup files that Revit saves.
If the number of backup files exceeds the maximum, then Revit purges the oldest files.

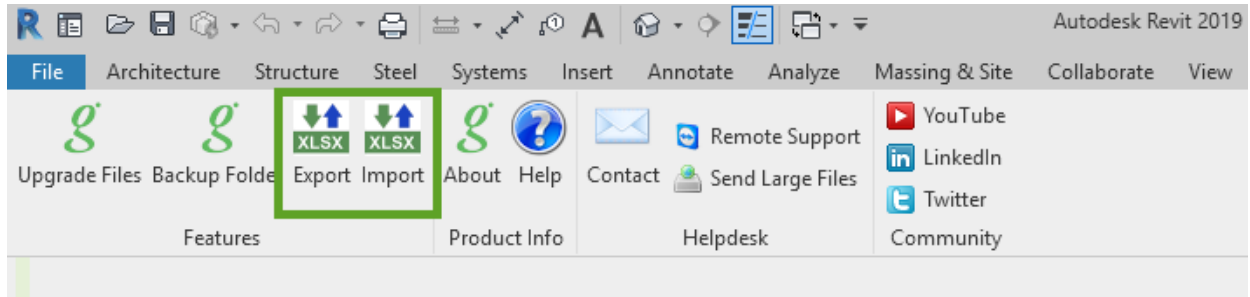
You'll have the possibility with the Revit Plus Pack tool "Backup Folder" to either put the backup files in a 'Backup' subfolder or a common general backup folder.



Enable the tool, review the number of files and choose the destination.... Confirm with the 'Save' button.

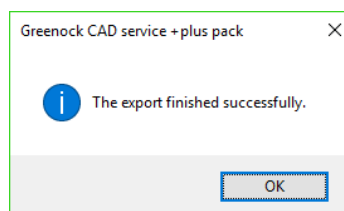
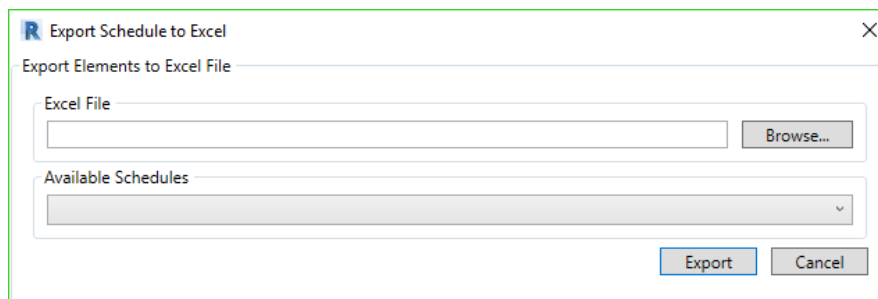


2.3 Export / Import XLSX

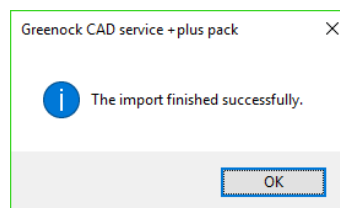
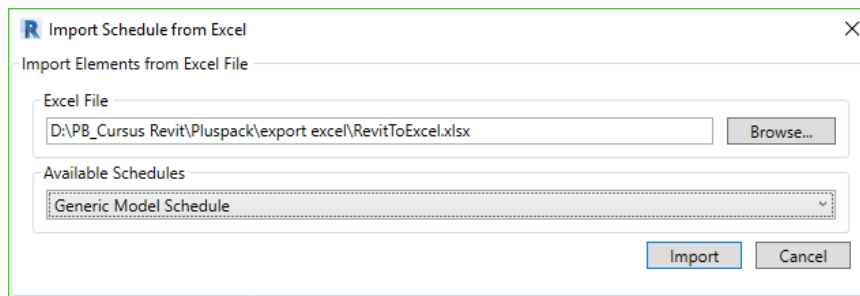


This functionality keeps a 'live' link between a Revit schedule and an excel file. Hence, lets you modify your model through a simple excel file.

You need to create a schedule first, then you can select it for export. Click the *Export* button in the ribbon. In the *Excel File* field you can enter a file name for the excel file and a location (use the *Browse...* button). The *Available Schedules* rolldown menu lets you choose any already created schedule. Click the *Export* button and an excel file will be created.



Click the *Import* button in the ribbon. Use the *Browse...* button to locate the excel file and select the corresponding schedule.



You will get a notification that the import was successful. Your schedule is updated and you will also see that your model has been updated according to the imported values.

REMARKS :

- ❖ **This utility works with 'Instance and Type parameters' which can be modified !**
- ❖ **'Combined Parameters' and 'Calculated Parameters', defined in the schedule, are NOT exported.**
- ❖ **Some parameters might be 'read-only' such as the 'Level' parameter... but also parameters which retrieve their value by an embedded formula defined in the Family.**

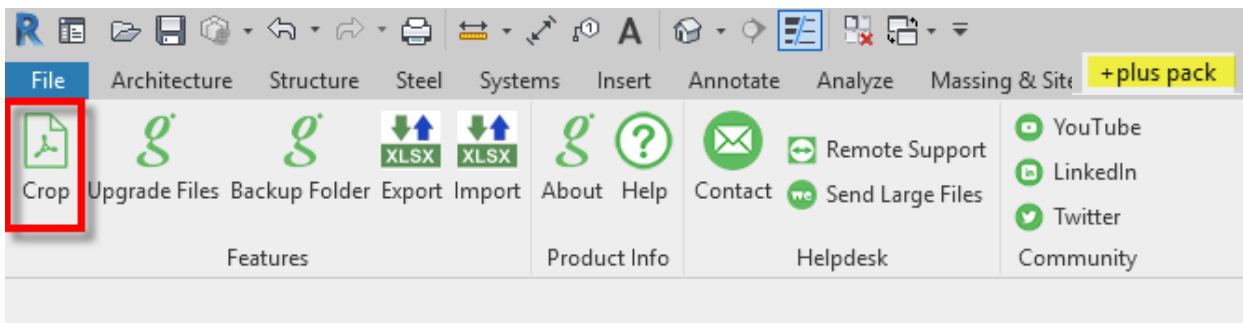
Their values will NOT be overwritten when importing other values !
A list will be displayed in the schedule contains 'read-only' parameters. Click the cross sign to close....
- ❖ **The value for the Type parameter should be the same value for each record belonging to the same Family Type.**
- ❖ **Use the default export tool of Revit (File/Export/Reports/Schedule) when you might have other goals with the exported data !**



2.4 Crop PDF to remove excessive white borders

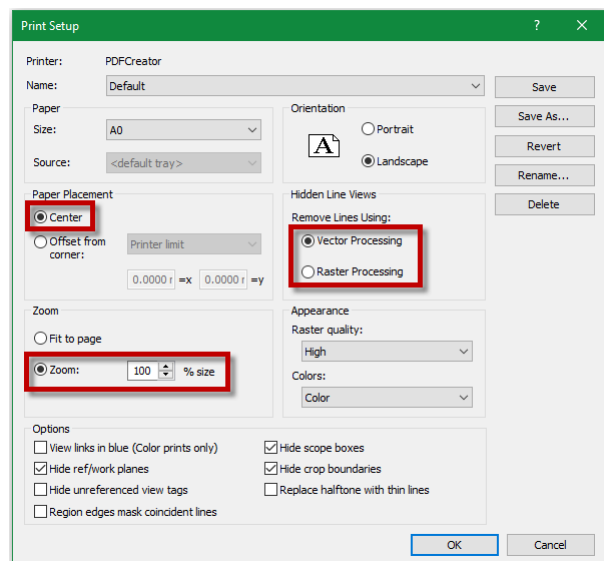
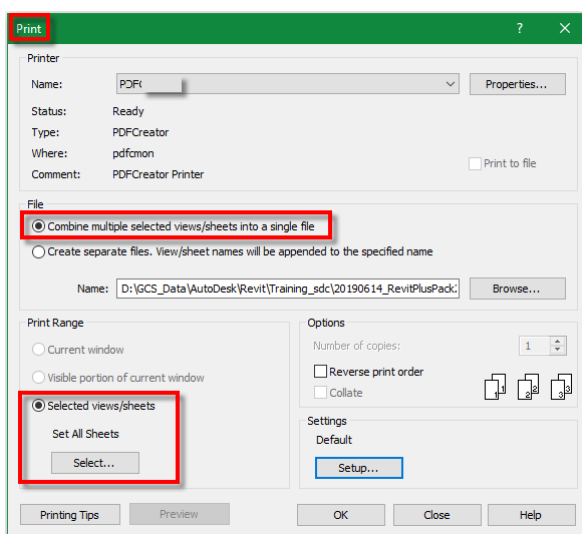
An amazing benefit of the PDF format is that there are no limits to page size, nor to the amount of content you can see on each page. But on the other hand, a multipage PDF with irregular page sizes will contain a lot of white space.

If you're looking for a tool to trim unwanted white space in a PDF file ?
Use the one available in the Revit + Plus Pack.

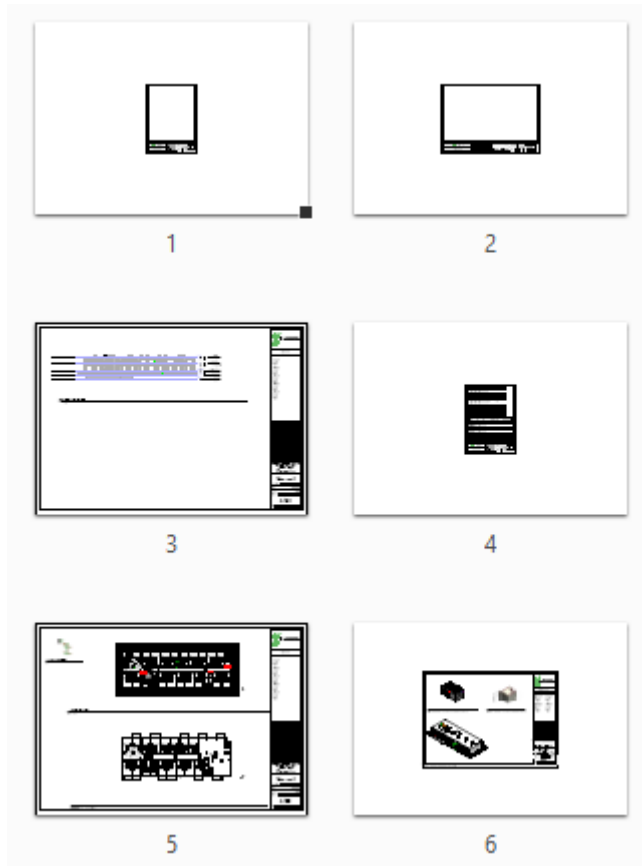


How to use the tool ?

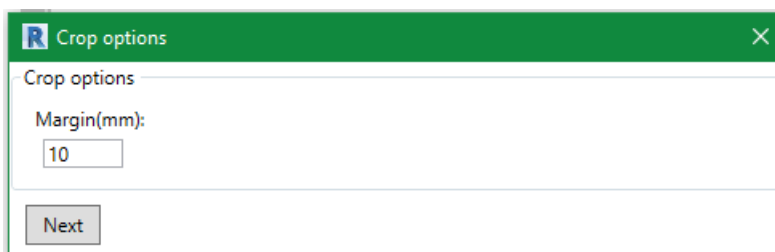
1. Generate your single or multipage PDF via the Print utility in Revit... selecting a single sheet or combining several sheets and/or views in different page sizes... either vector or raster processed.



It will result in a single or multipage PDF which might contain a lot of white space...

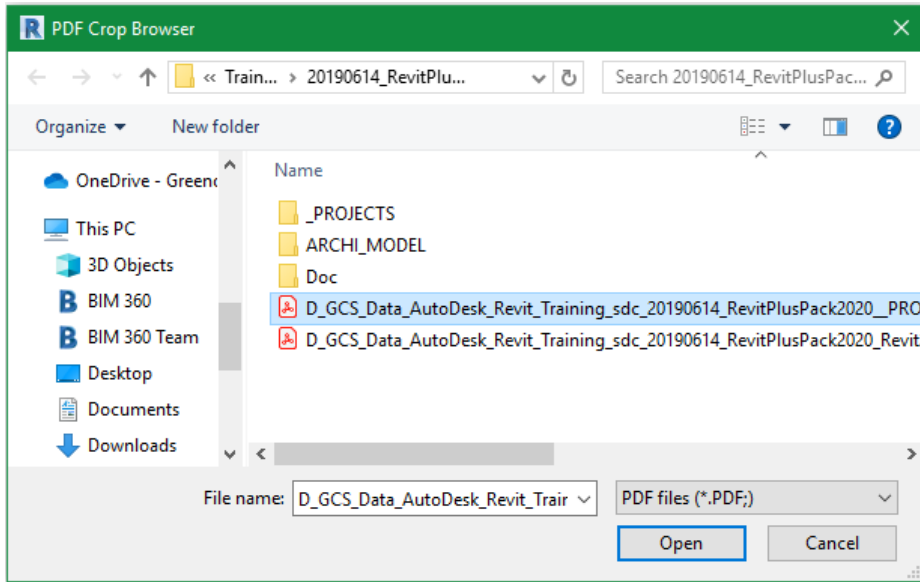


2. Execute the **Crop** tool from the + plus pack tab...
3. In the Crop options window, indicate the margin in mm...

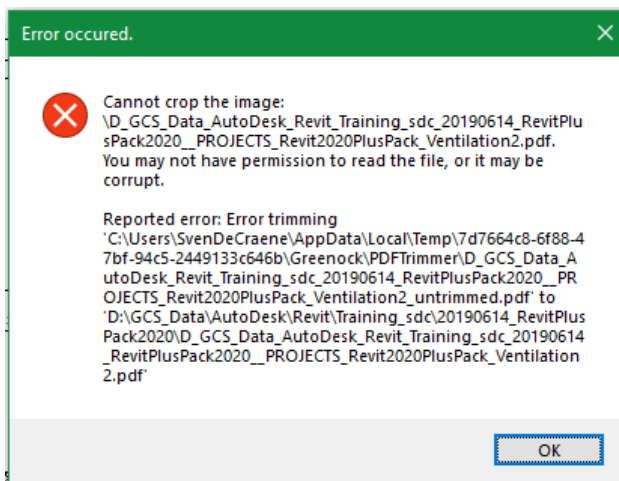


The offset value can also be NEGATIVE !

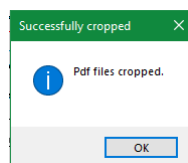
4. Select the PDF('s) to crop... and click on the 'Open' button



5. Your Revit session will temporary not respond during the execution of the Crop tool....
6. If the following error message is displayed, it might also be the PDF is currently open in a PDF reader...

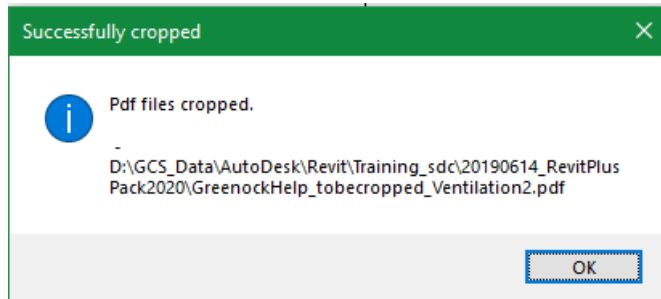


7. After clicking OK, the "successfully cropped" message will be displayed...although one of them failed.

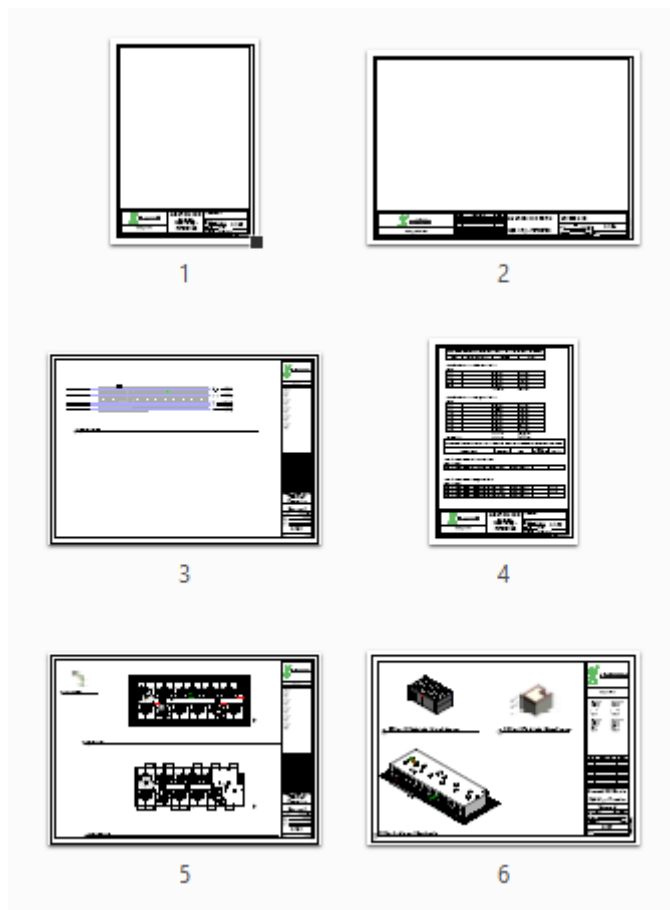


8. Make sure the PDF reader is closed !

Re-execute the Crop tool for the failed ones as explained in the previous steps...



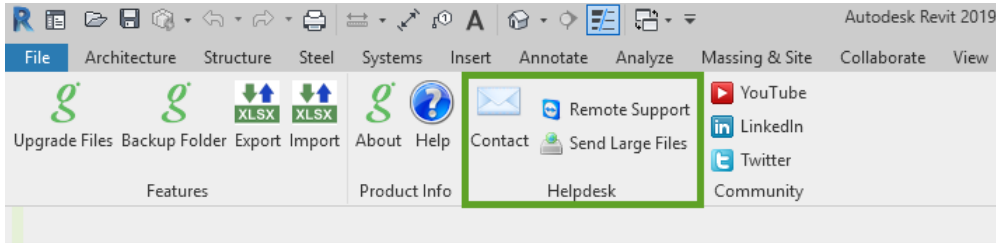
Resulting in...



Remark: the selected original PDF files are modified... meaning you don't keep the original one, neither another directory/folder is requested during the process.



3. Contact Greenock Helpdesk.



With this buttons you can contact the Greenock helpdesk consultant directly by email without the need to switch to another program (Outlook, Lotus Notes, ...).

You can also ask for remote support and send large datasets via the free WeTransfer service.

Via the Help button, you open this document.

Contact Details
Industrielaan 27
9320 Erembodegem
Belgium
Phone: +32 (0)53 85 25 95
Fax: +32 (0)53 77 93 60

P.I. des Hauts-Sarts
Rue de Hermée 255
4040 Herstal
Belgium
Phone: +32 (0)42 64 03 23
Fax: +32 (0)42 64 31 40

helpdesk@greenock.eu
info@greenock.eu
www.greenock.eu

Product Details
Name: Revit PlusPack App
Product key: RevitPP2019
Version: 19.0
Optional info: Designed by Greenock CAD Service

Autodesk Product Details
Name: Autodesk Revit 2019
Serial number:
Version: 2019 (19.0.0.405)

Registration Details
Serial number:
ExpireDate: 24.10.2019
Computer or Domain:
Request submitted: 24.10.2018
Activation Status: Activated 363 days left

Company Details
Name: Greenock CAD Service
Address: Industrielaan 27
9320 Erembodegem
Belgium

Contact Details
Name:
Email:
Phone:
Fax:

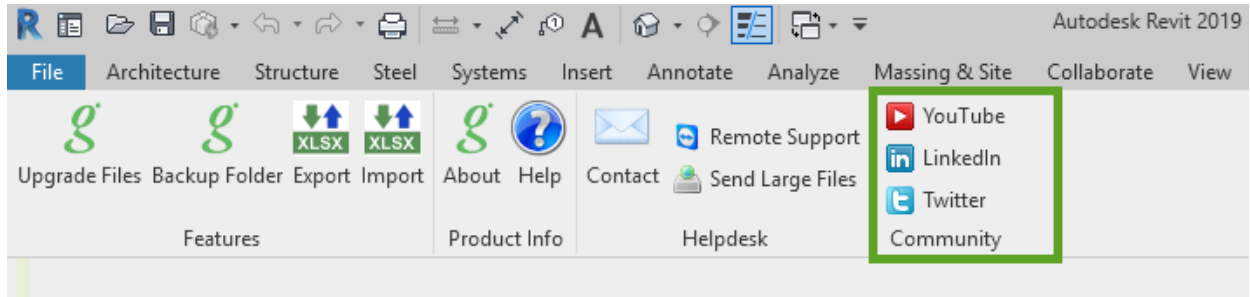
Problem description

Additional Options
 Attach diagnostics file

Send Cancel



4. Participate in the Greenock CAD Service community.



Connect to Greenock CAD Service by social media or watch related content on YouTube.